

FILTER CHANGE ON SILENT AIR COMPRESSORS

This is the WHISPER (SILENT AIR) box it is located on the rear of your unit. This is the process to change all size whisper units.

1. Remove the 7 screws securing the door to the whisper unit.
2. Remove the door and set aside

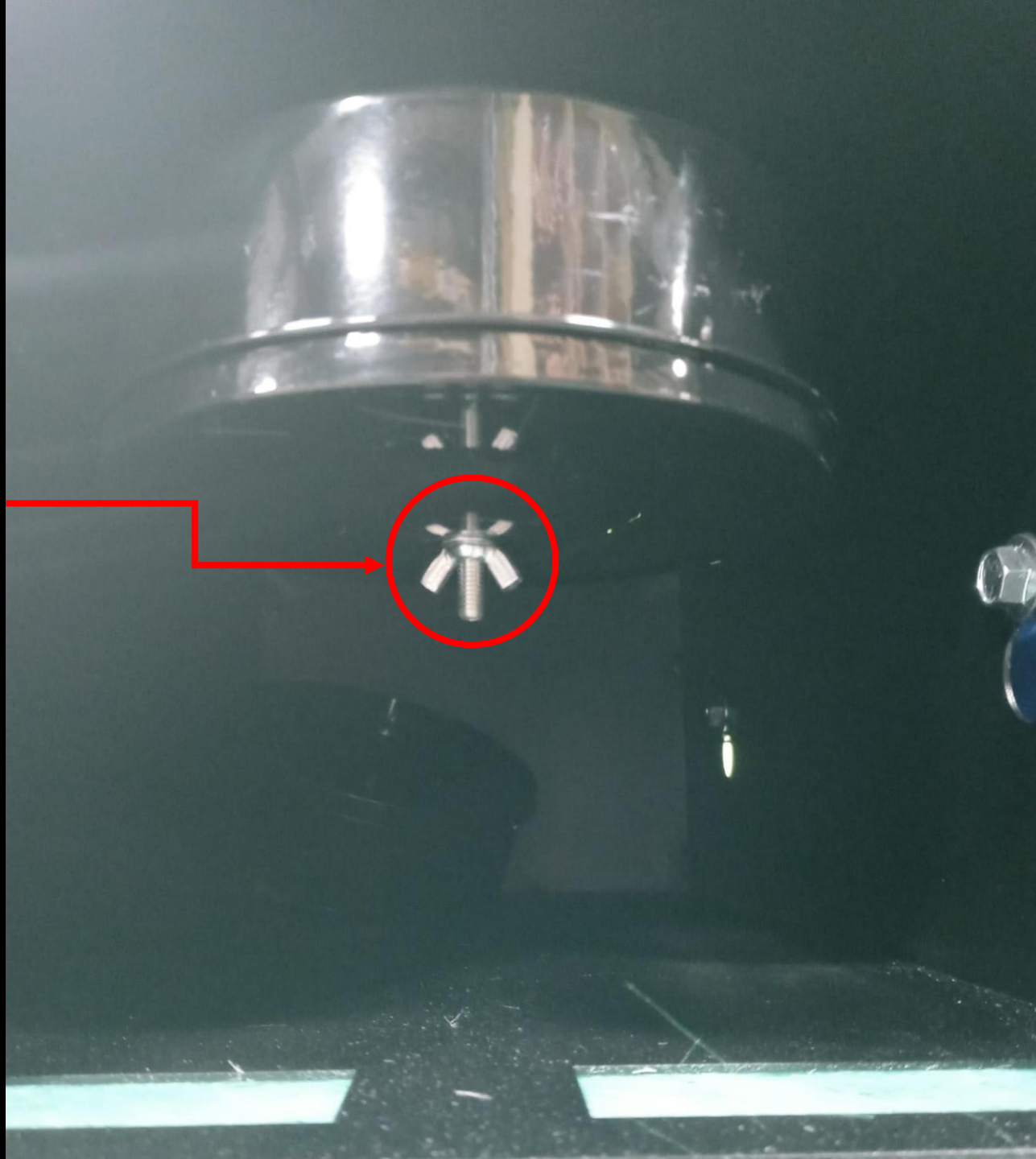


Once the cover is removed this is what you will see.

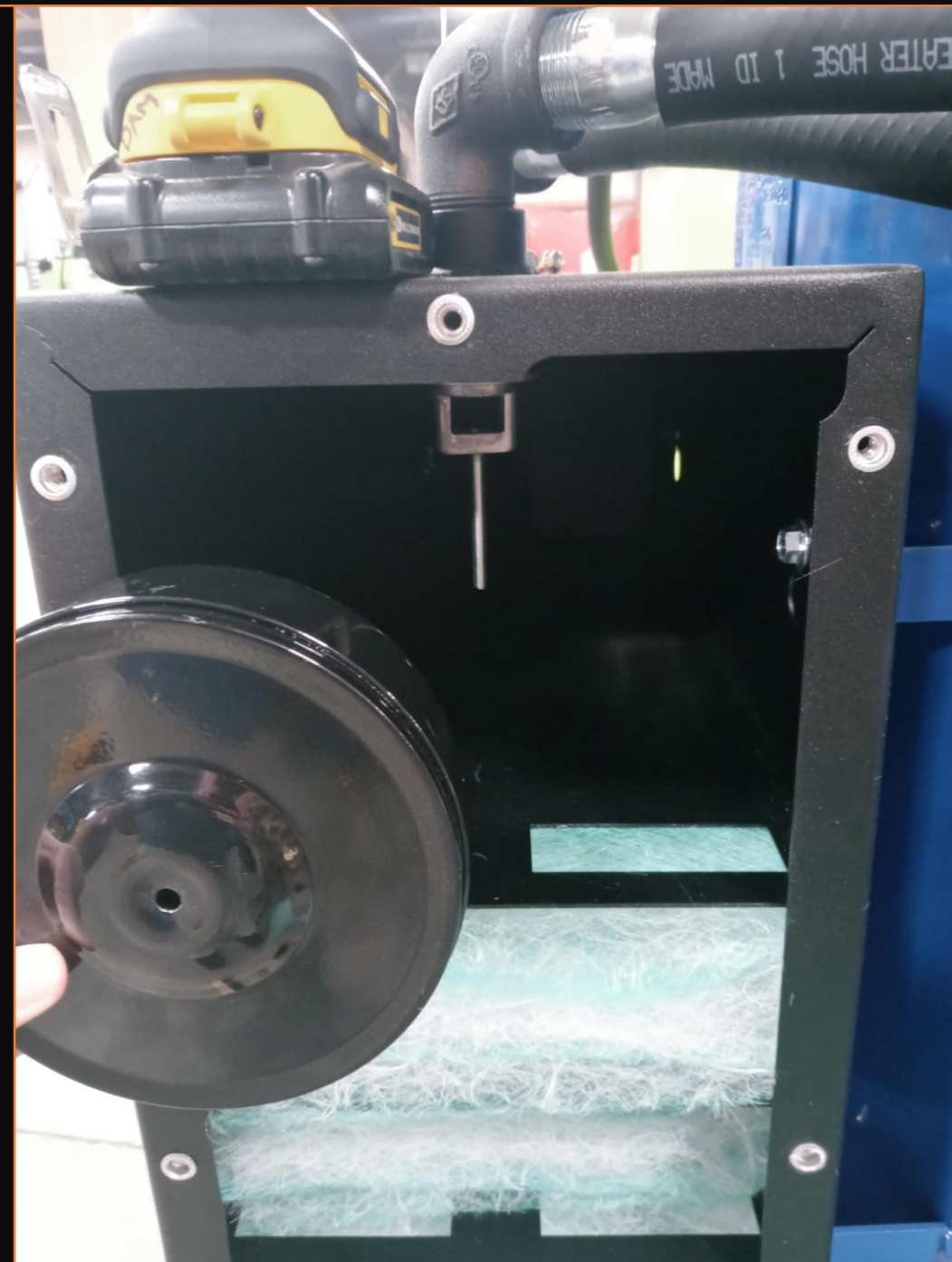
3. Remove all flat fiber filters and set aside. DO NOT replace these filters yet



4. Loosen and remove wing nut holding the filter assembly to the coupler.



5. Remove the filter housing from the silencer





6. Replace filter and reinstall assembly back into Whisper unit ensuring to tighten the wingnut.

7. Replace filters and reinstall door.

